

Sharing genome-wide screening and RNA-seq experiments in reproducible data packages using R/Bioconductor

Michael J. Steinbaugh, PhD

Joslin Diabetes Center

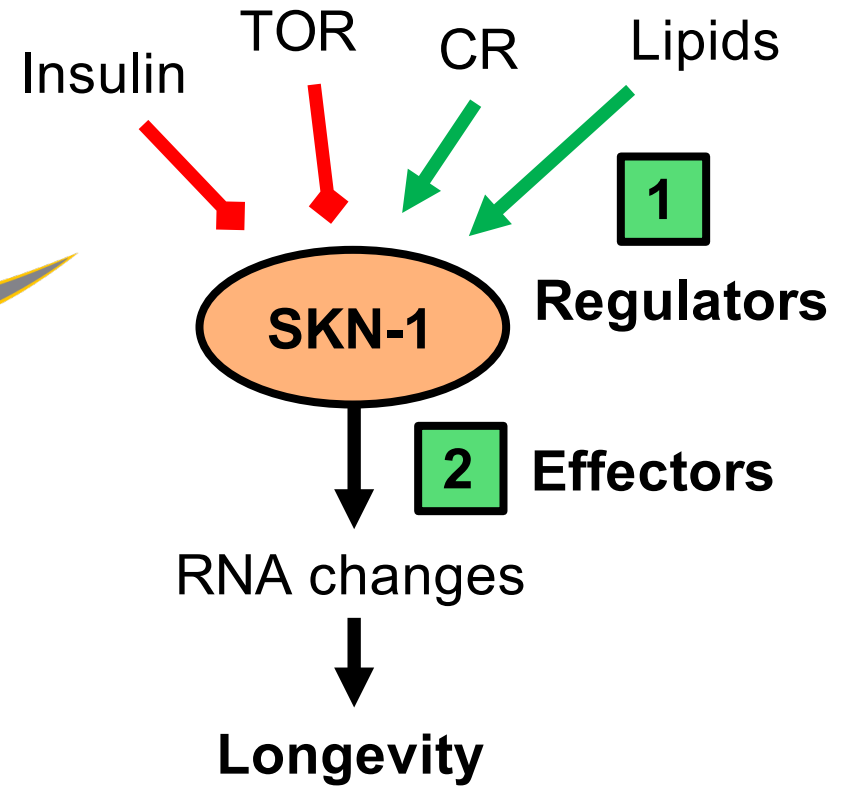
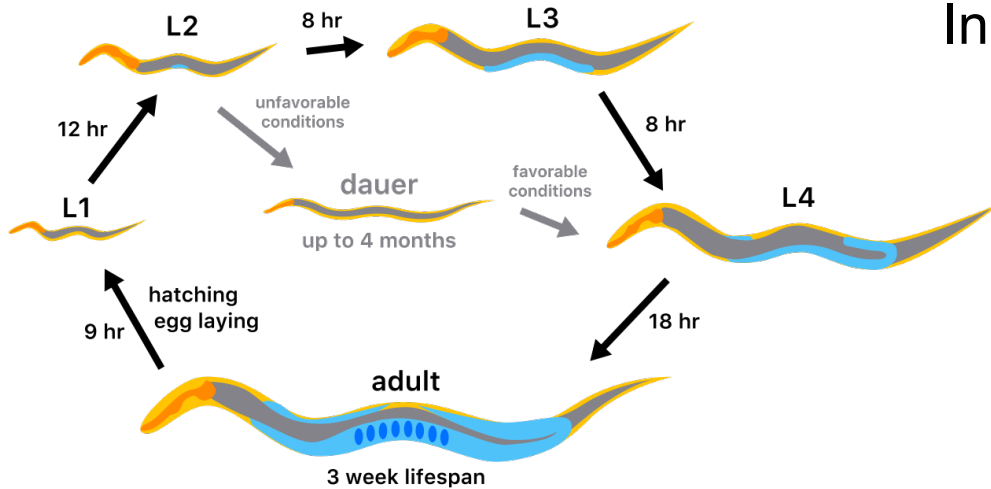
Harvard Medical School

June 24, 2016

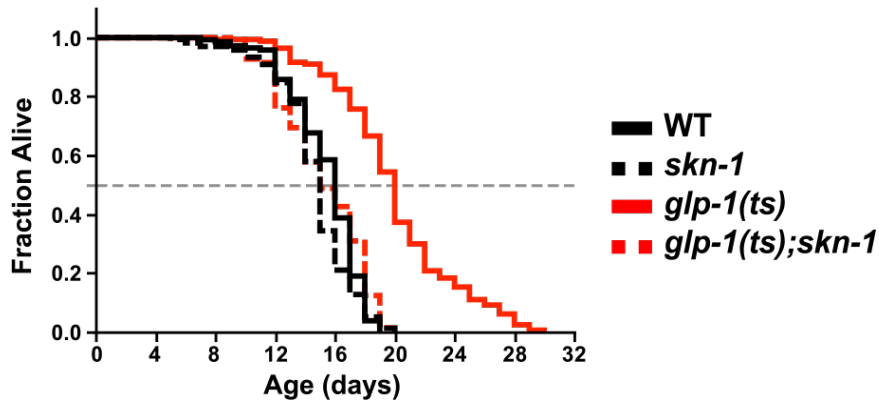


Using *C. elegans* to study the genetics of aging

Short life cycle – 3 weeks



Transcription factors control aging (e.g. SKN-1/Nrf)

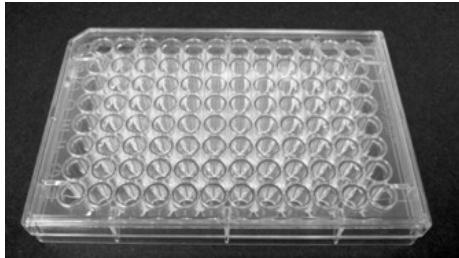


1st genome sequenced!
~20,000 genes, many conserved

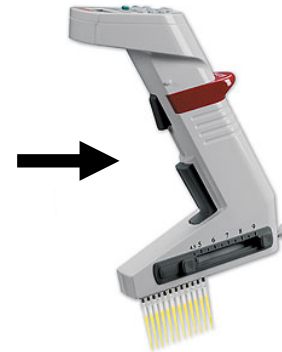
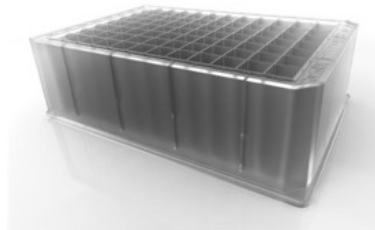
Blackwell et al., *Free Radic Biol Med* (2015)
Steinbaugh et al., *eLife* (2015)

Approach 1: Genome-wide RNAi screening

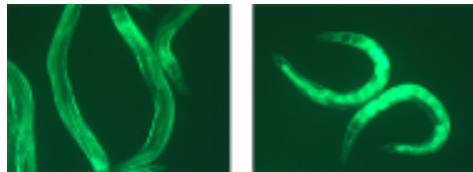
ORFeome Library
(RNAi plasmids in *E. coli*)



Culture clones



GFP scoring in vivo



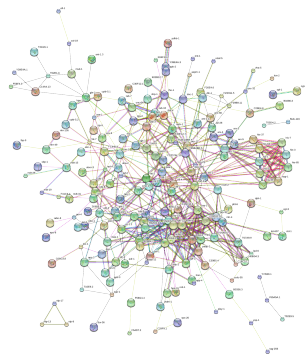
transgenic reporter

Feeding RNAi



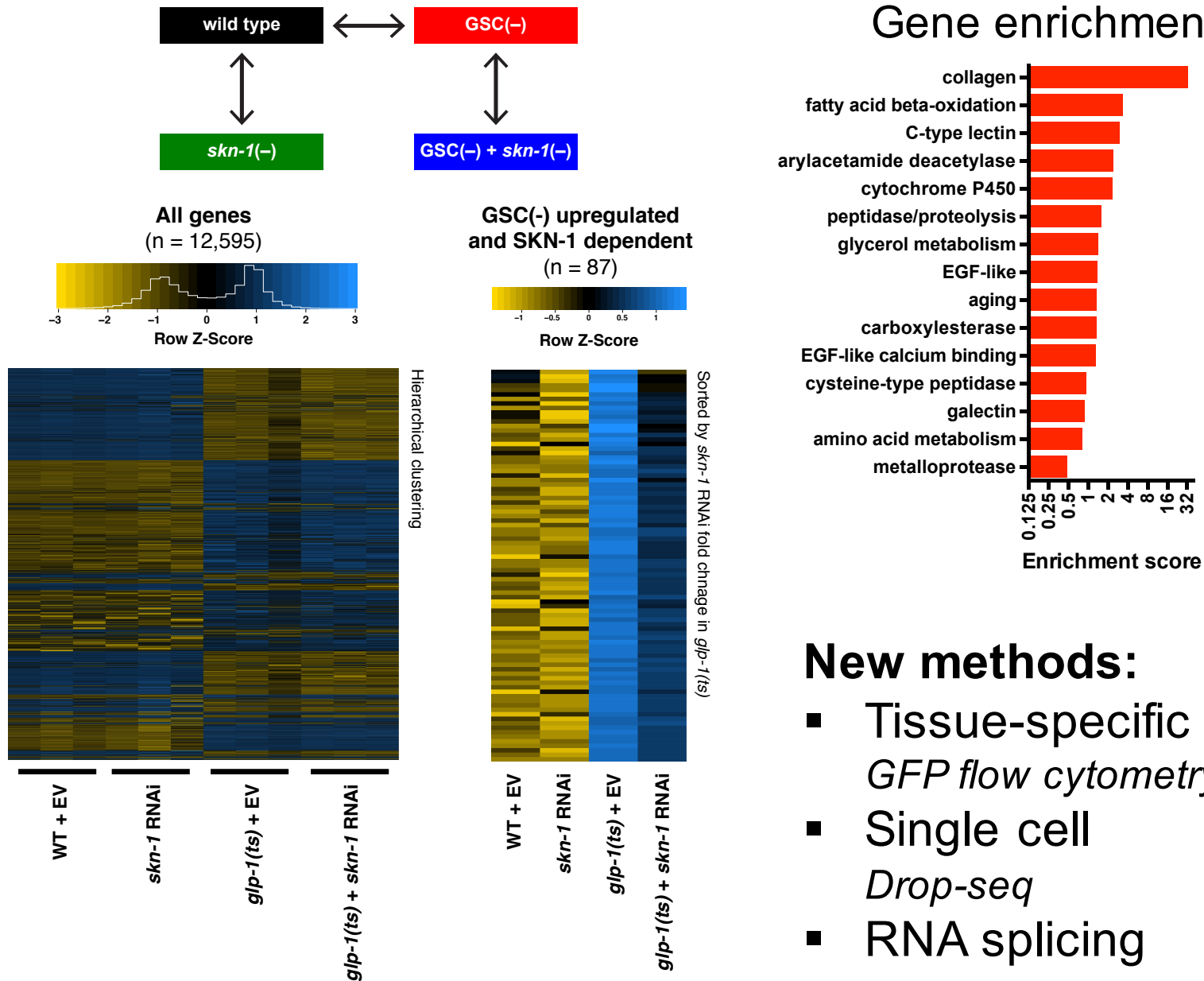
bacterial lawn + worms

Filtering
R

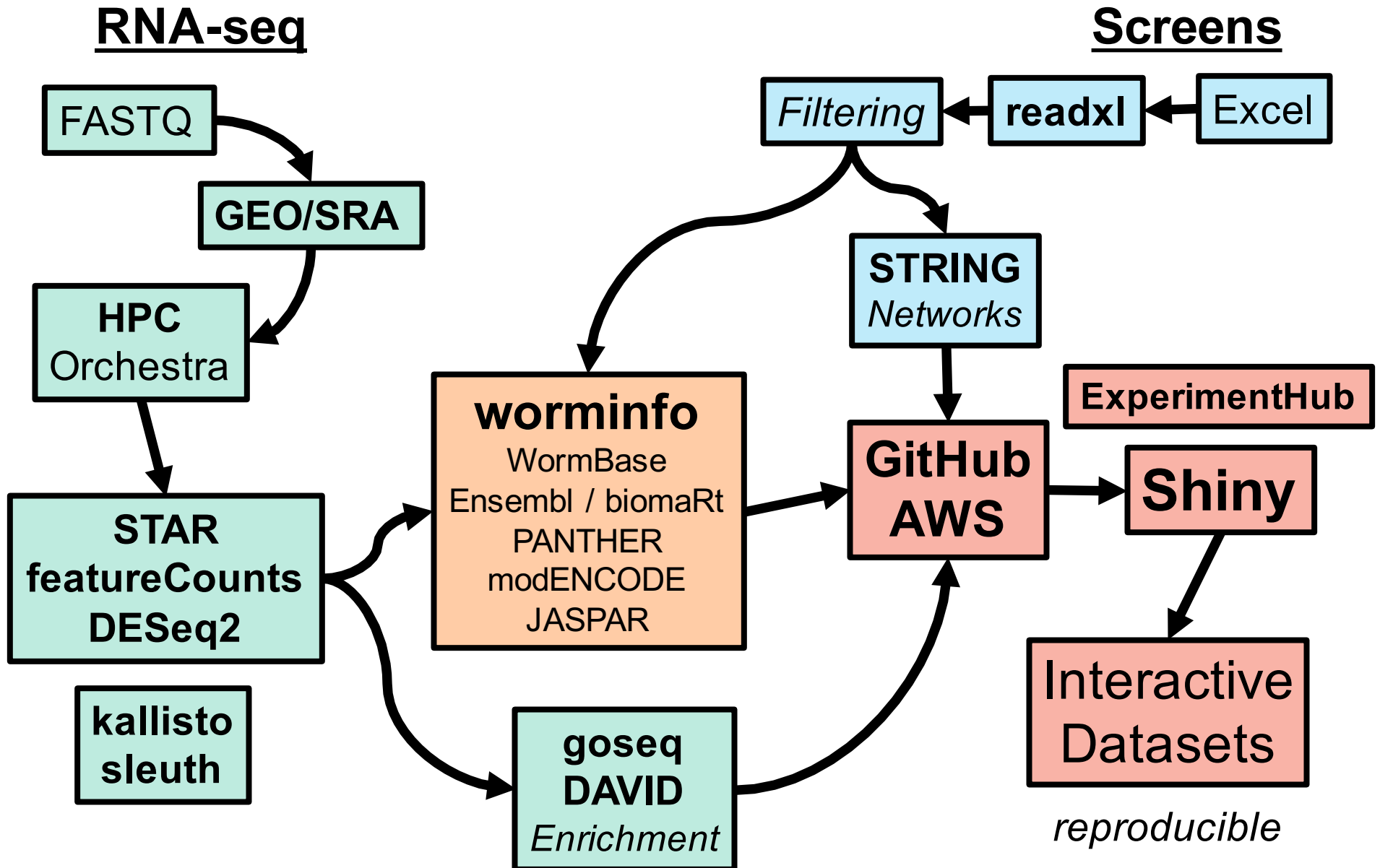


- Candidate genes
- Candidate pathways
- **New testable models**

Approach 2: Transcriptome profiling with RNA-seq



Developing new tools for analysis and data sharing



Acknowledgements

Keith Blackwell

Jorge Castillo-Quan

Meltem Isik

Ziyun Wu

Peng Zhang

Genome Screening

Lorenza Moronetti

Magdalena Teufel

RNA Sequencing

Jonathan Dreyfuss, Joslin Core

Lipidomics

Charles Serhan, BWH/HMS

Justin English

Paul Norris

Meng Wang, Baylor

Chih-Chun Lin

Transgenics

Chris Link, Colorado

Shohei Mitani, NBRP

Funding

NIH / NIDDK T32 NRSA

NIH / NIA R21

